

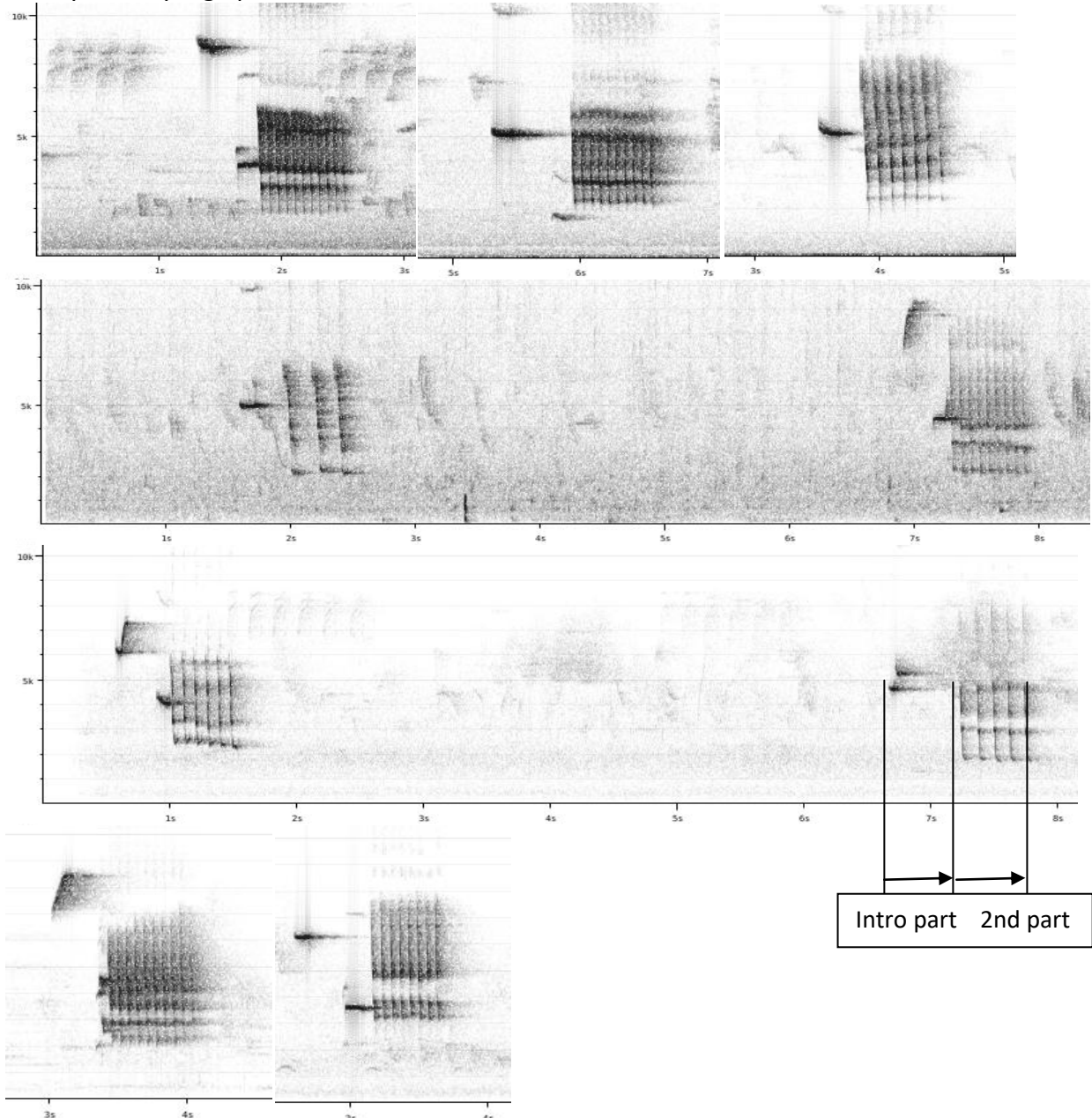
## Notes on the vocalizations of Japanese Robin (*Luscinia akahige*)

Peter Boesman

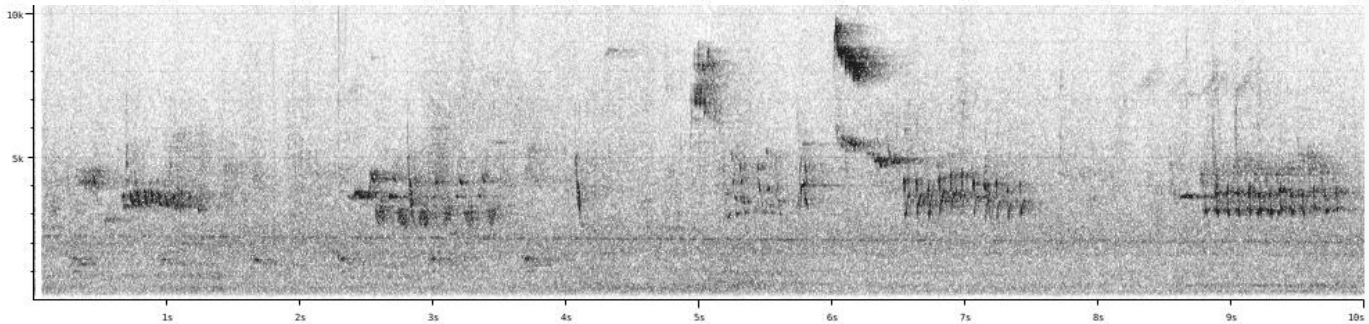
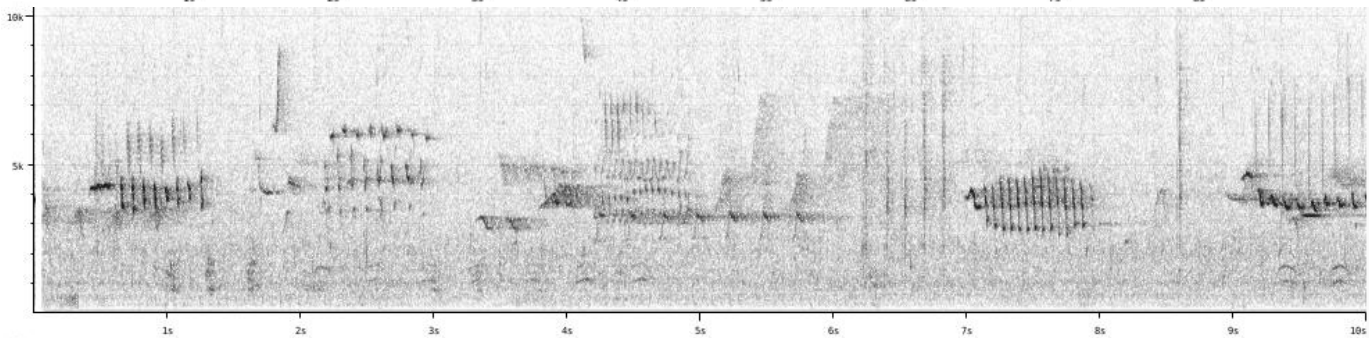
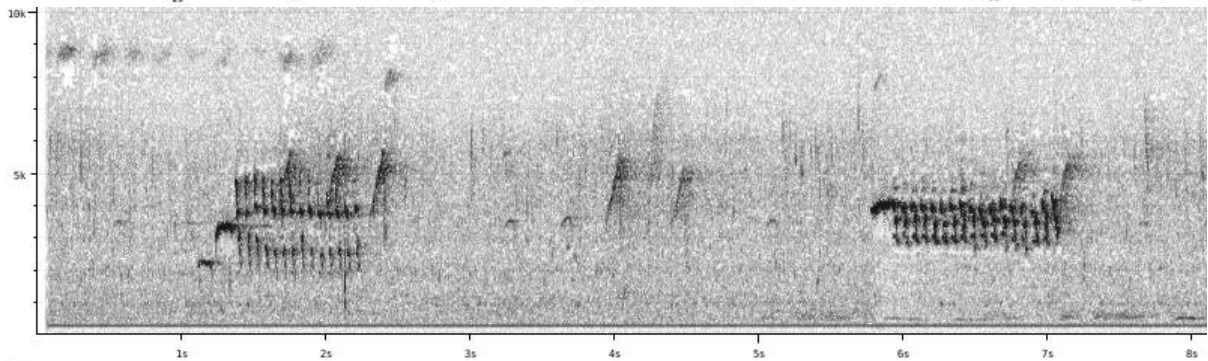
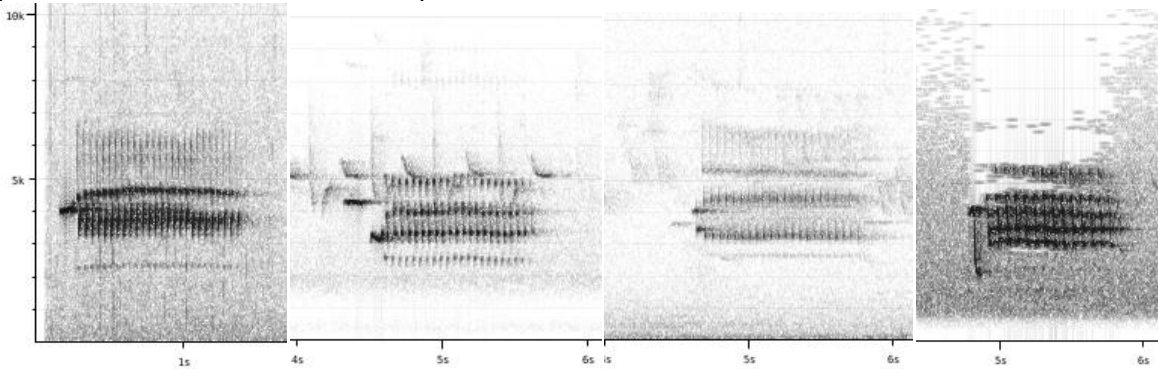
In the following we briefly analyze and compare voice of the two races of Japanese Robin (*Luscinia akahige*). We also try to quantify the extent of any vocal differences using the criteria proposed by Tobias *et al.* (2010), as a support for taxonomic review. We have made use of sound recordings available on-line from Xeno Canto (XC).

A comparison of song of both races, illustrated with sonograms:

*tanensis*: Song consists of one or two introductory notes followed by a rapid series of notes, usually at fairly high pace but sometimes also slower.



*akahige*: Song consists of one or two short introductory notes followed by a fairly long high-paced trill, sometimes at slower pace.



Song of both races is structurally similar, but there are subtle differences as can be seen from the following measurements:

	<i>tanensis</i>	<i>akahige</i>
duration of introductory part	c. 0.3 - 0.7s	c. 0.1 - 0.3s
duration of second song part	c. 0.6 - 0.8s	c. 0.8 - 1.2s
number of notes	c. 3 - 12	c. 6 - 26
max. pace n/s	c. 5 - 15	c. 6 - 22
freq. range second song part	c. 4 - 6kHz	c. 2 - 5kHz

Song of *tanensis* has longer introductory notes with an overall longer duration of the introductory part (score 1 - 2) and a trilled part of the song which is shorter in duration (score 2) with fewer notes (score 1) delivered at a slightly slower pace and with a slightly larger frequency range (bandwidth).

To the ear, due to pace difference, *tanensis* sounds more stuttering while *akahige* more trilled.

When applying Tobias criteria, this would lead to a total vocal score of about 3.

This note was finalized on 16th May 2016, using sound recordings available on-line at that moment. We would like to thank in particular the sound recordists who placed their recordings for this species on XC: Desmond Allen, Lance Benner, Peter Boesman, Frank Lambert, Yann Muzika, Masato Nagai, Anon Torimi and Alex Yakovlev.

### References

Tobias, J.A., Seddon, N., Spottiswoode, C.N., Pilgrim, J.D., Fishpool, L.D.C. & Collar, N.J. (2010). Quantitative criteria for species delimitation. *Ibis* 152(4): 724–746.

### Recommended citation

Boesman, P. (2016). Notes on the vocalizations of Japanese Robin (*Luscinia akahige*). *HBW Alive Ornithological Note* 324. In: *Handbook of the Birds of the World Alive*. Lynx Edicions, Barcelona. (retrieved from <http://www.hbw.com/node/1252619> on 20 October 2016).